

BUDGET CONVERSATION



BUDGET CONVERSATION



Tameside Council is responsible for the delivery of a range of services from residential and nursing care for the elderly, through to street cleaning and bin collections. The total amount of money spent by the Council each year is almost £600 million. Although this is a significant sum of money, that amount has reduced considerably over the last ten years due to cuts in funding from Central Government. The Council has therefore had to find increasingly new and innovative ways to provide the services local people want within our limited resources.

The coronavirus pandemic presented significant financial challenges for the Council, and this legacy continues to impact the financial position of the Council. These legacy issues are now combined with significant inflationary pressures, and the cost of living crisis. These pressures mean that our already challenging financial position is looking increasingly difficult in 2023/24 and beyond.

Over the next few pages we explain where the money we spend comes from, where we spend it and then ask for your views that will help us set our budget for 2023/24.

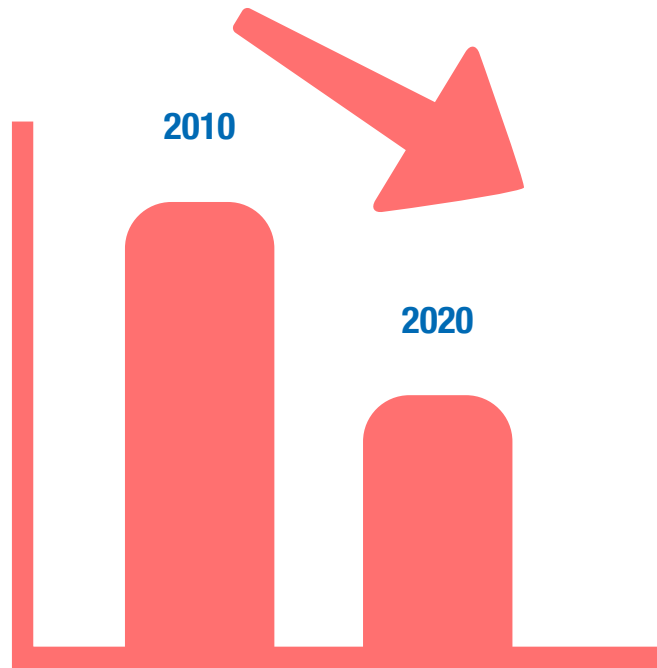


BUDGET CONVERSATION

2023
2024

Over recent years the amount of money in real terms we have to spend on local service has decreased significantly. This is expected to continue in future years.

Since 2016 increases in 'Core Spending Power' (the Government's assessment of money available to local government), were due to increases in council tax rather than funding from central government. Local sources of income, including council tax, business rates, and sales, fees and charges have become increasingly important as a source of income to local government, forming an increasing proportion of their budget.



Between 2010 and 2020 local government faced cuts to funding from central government of £18.6 billion in real terms.

Tameside Council has had to save **more than £180 million**

since 2010. This is due to a combination of rising costs, increasing demand for service and cuts in funding from central government.



We estimate that we may need to save **further £25 million** in 2023/24.

Inflation is placing significant pressures on our budgets, particularly in respect of energy costs for buildings and street lighting. The legacy impacts of Covid-19 also continue to limit the amount of income we can collect from business rates, council tax, fees and charges.

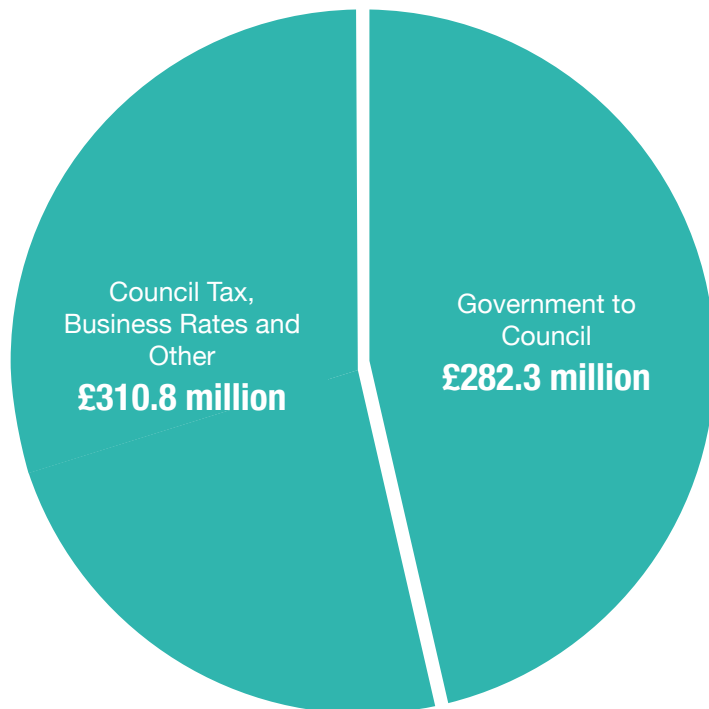
BUDGET CONVERSATION

2023
2024

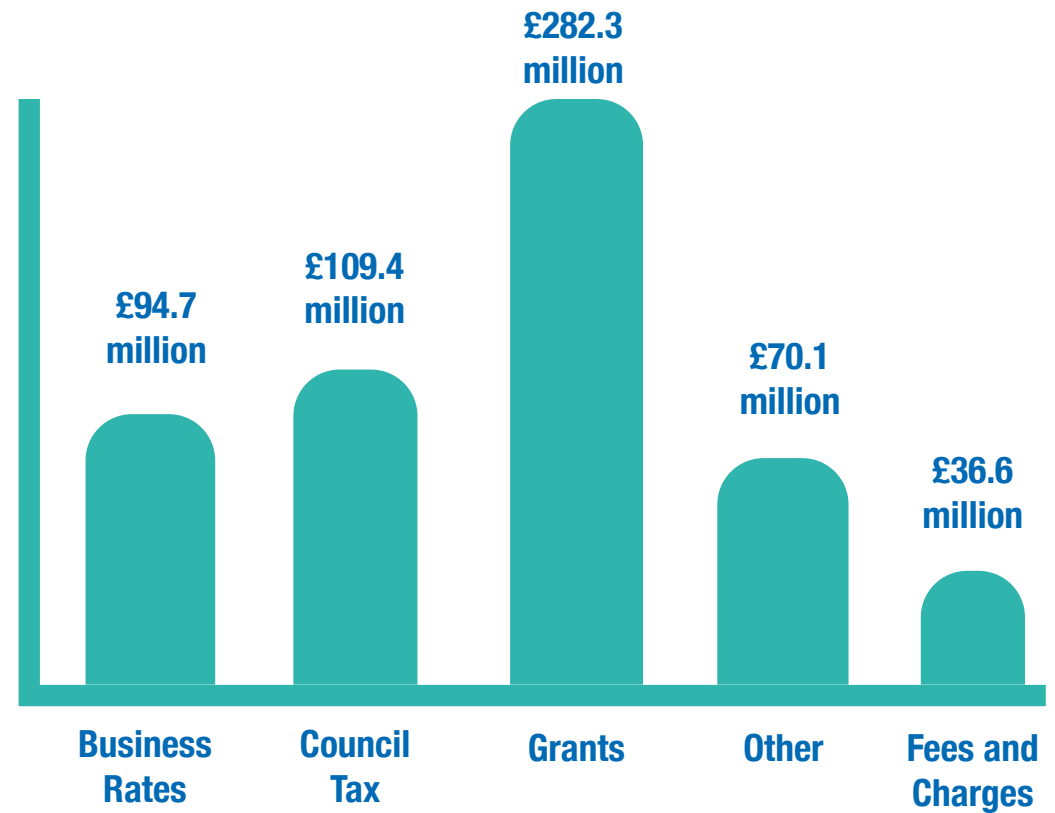
Where does our money come from?

Government Funding

The Government provides nearly half of the money we spend.



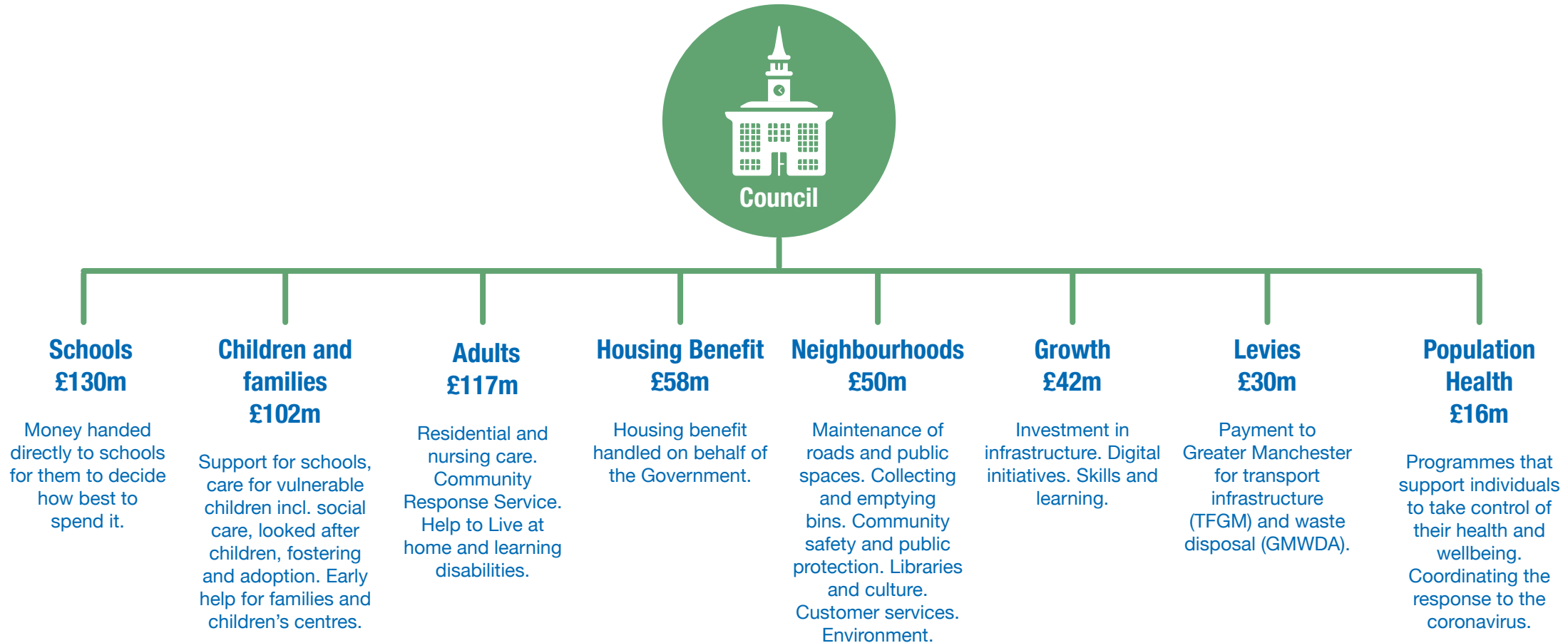
Council Tax, Business Rates, Grants, Fees/Charges and Other



BUDGET CONVERSATION

2023
2024

The main spending areas are:



The council has limited influence over some areas of spending such as schools and housing benefits as they are set by the government. As such savings to balance the budget have to be made from the other areas of spend.

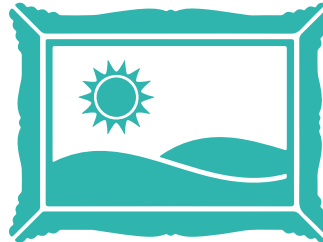
BUDGET CONVERSATION

2023
2024

Examples of services provided:



37,498 pupils
taught across
98 schools



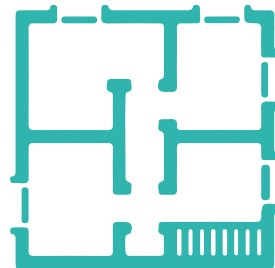
Had **200,430** visits to our libraries last year
5,475 visits to our local studies and
archives centre
39,750 visits to Portland Basin museum
1,728 visits to Astley Cheetham Art Gallery
(note: covid restrictions impacted the museum and
gallery, with PB requiring bookings for some of the year)



448,912 issues of physical and digital items
from the library service
327 physical and digital events in Culture
669,682 engagements with cultural
activities, events and venues both physically
and digitally.



Maintain **26,000**
street lights, **48,000** road
drainage gullies, **1,155**
kilometers of pavements,
758 kilometers of
carriageways, **26** parks,
37 playgrounds and **15** Multi
Use Games Areas, **32** sports
pitches cut and marked out
and inspect **35,000** trees
on highways and green space



Dealt with
747
planning applications
772 Licensed Premises



Answered
78,459 calls and webchats
to the contact centre last year



11 million bins collected
75,000 tonnes of household waste for recycling,
composting and disposal
Empty **50,000 domestic bins**
and **200,000 recycling bins** per week
898 Street Litter Bins emptied at least twice per week
4,451 complaints received regarding dumped waste

BUDGET CONVERSATION

2023
2024

Examples of services provided:



160,000

metres of ducting installed for
Digital Tameside



8,182

supported through Housing
Advice



Transport

Over 700

vulnerable residents each day



150

Hackney Carriage Vehicles Licensed

617

Private Hire Vehicles Licensed

786 Licensed Drivers



Maintain and operate a fleet of over
200 vehicles and items of plant



2202

residents supported to claim

4.2 million

pounds of welfare benefits

81%

successful representation at
benefits appeals



1130

households given emergency
support through welfare rights

3,272

welfare and debt cases
opened



350km

of carriageways treated during
winter gritting operations

400 grit bins

270km of Public Rights of
Way (public footpaths)

BUDGET CONVERSATION

2023
2024

Examples of services provided:



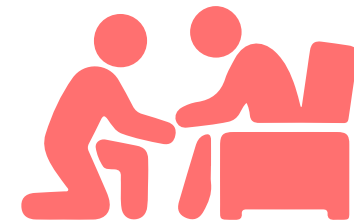
Commission care for
886 people
in residential or
nursing homes



Act as parent to
**Over 666 looked
after children**



We have visited or contacted
2,305 new mothers
to offer help and advice



Provide support to
2962 people
to live independently
and remain in their
own homes

We'd love to hear your views.



Please go onto our survey and answer a couple of questions in your own words.

- What do you think should be the spending priorities for Tameside Council for 2023/24 and future years?
- Do you have ideas or suggestions for how we might deliver services more efficiently, save money or raise revenue?

